

Fitting Instructions

Revo Carbon Front Intake Kit VAG 2.0 TDI MQB

Fitting Difficulty



Contents

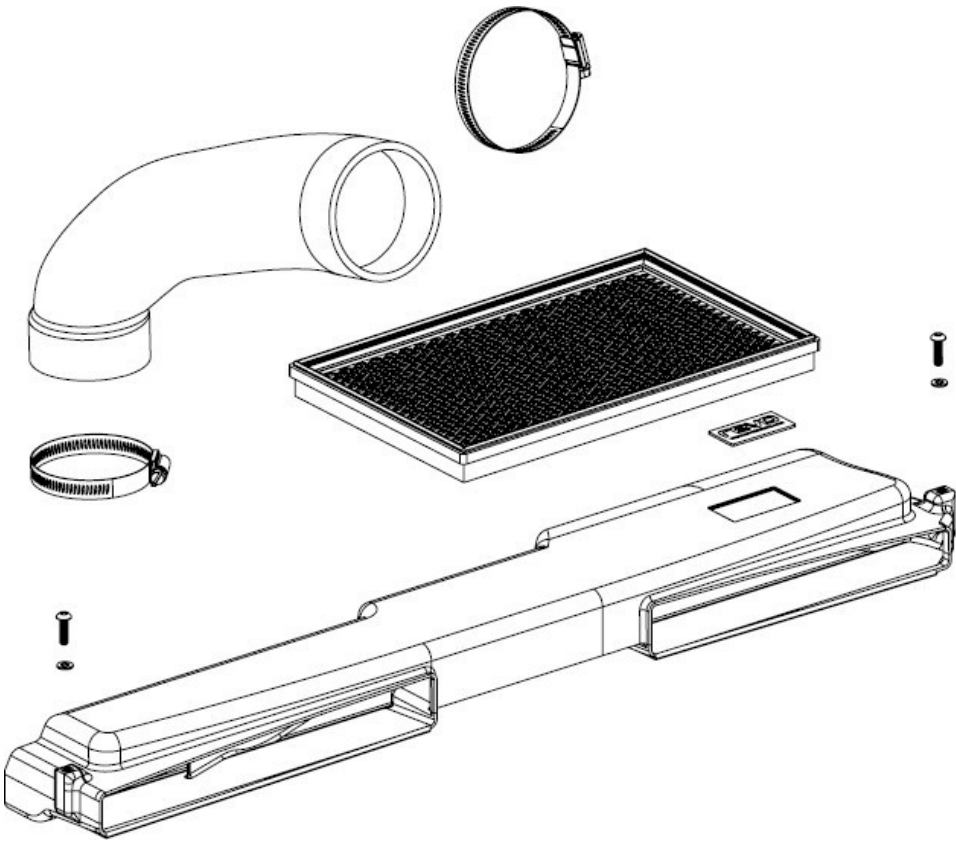
Description	
Revo Intake Hose	1
Revo Carbon Front Section	1
Revo Air Filter	1
M5x18mm Bolt	2
M5 Washer	2
70-90 Hose Clamp	1
60-80 Hose Clamp	1

Recommended Tools

Tools	Size
Ratchet	
Extension	
Sockets	7mm
Torx Bits	T25
Constant Tension Pliers	



Before starting, please ensure that the battery is disconnected and you have ensured the engine is cool. Engine temperatures can remain high for a substantial amount of time after use.



Fitting Instructions

Revo Carbon Front Intake Kit VAG 2.0 TDI MQB

Fitting Difficulty



Installation was performed on a UK spec. Octavia VRS TDI 180PS. Installation on other vehicles will be similar but may not be exact.

- 1 Remove the connector from the air flow sensor by pulling up the grey tab. Next, remove the vacuum hose from the airbox lid.



- 2 Remove the hose clamp from the intake hose and then pull the vacuum hose free from its clip and move out of the workspace.



- 3 Using a 7mm socket, loosen the hose clamp that secures the intake hose onto the turbo inlet and remove the intake hose from the vehicle. Next, unclip the 2 x wiring looms that are attached to the hose and position out of the workspace.



- 4 Remove the airbox assembly by pulling firmly upwards to free from the 3 x rubber grommets.



Fitting Instructions

Revo Carbon Intake Kit 2.0 TDI MQB

Fitting Difficulty



- 5 Remove the 2 x T25 bolts holding the front air intake section in place and remove the front section from the vehicle.



- 6 Remove the 8 x T25 bolts from the airbox lid and remove the OE air filter.



- 7 Remove the snow/mud filter from the bottom of the airbox by using a flat headed screwdriver to release the tabs around the outside.

Note: the snow/mud filter is quite brittle so take care not to snap the tabs when removing it.



- 8 Fit the Revo air filter (supplied) into the airbox, refit the 8 x T25 bolts and tighten to the factory torque specification.

Fitting Instructions

Revo Carbon Intake Kit 2.0 TDI MQB

Fitting Difficulty



- 9 Fit the Revo carbon front section and secure using the 2 x M5 hex bolts (supplied). Tighten to 3Nm.



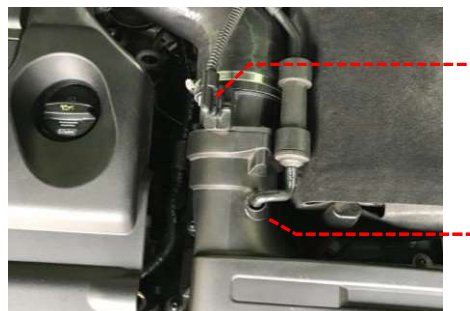
- 10 Refit the airbox assembly and push down to fit back onto the 3 x rubber grommets.



- 11 Fit the Revo intake hose, make sure the 2 x hose clamps are in a good location for access and then tighten to 5Nm.



- 12 Reconnect the air flow sensor plug and the vacuum hose to the airbox lid.



Fitting Instructions

Revo Carbon Intake Kit 2.0 TDI MQB

Fitting Difficulty



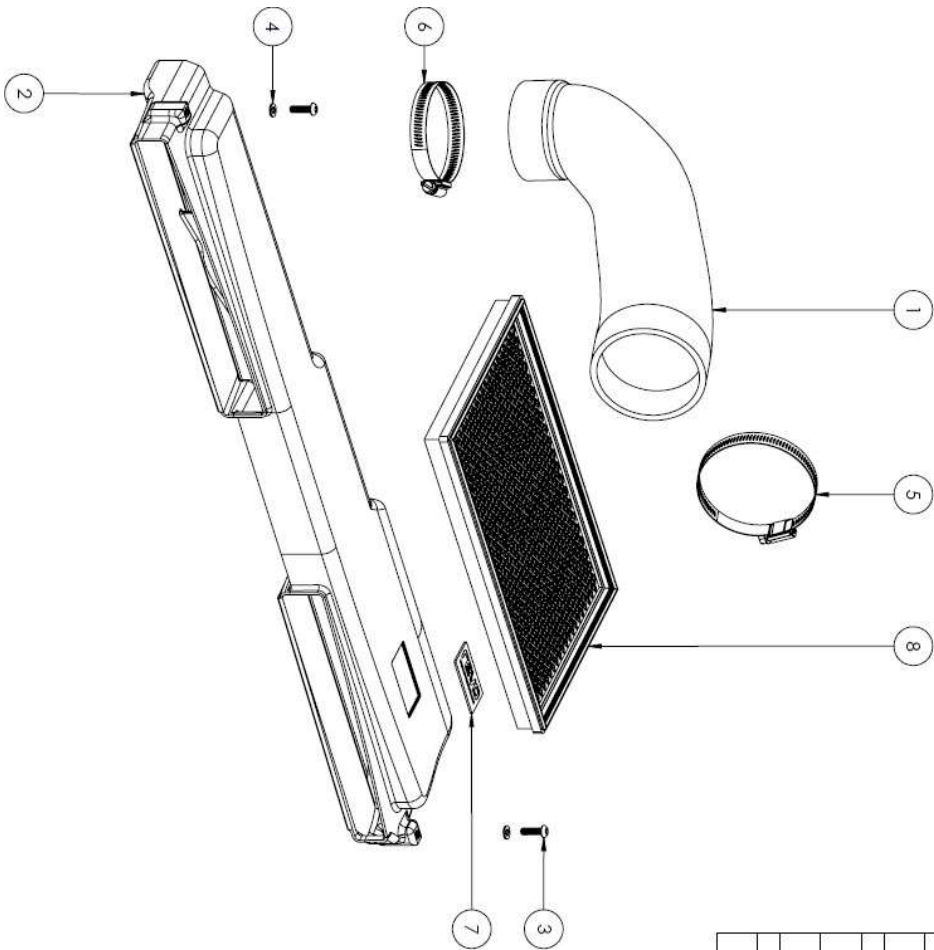
- 13 Test drive the vehicle to ensure there are no leaks/part interference during operation. Your installation is now complete!



Fitting Instructions

Revo Carbon Intake Kit 2.0 TDI MQB

Fitting Difficulty



ITEM NO.	DESCRIPTION	QTY.
1	MQB TDI INTAKE HOSE	1
2	MQB CARBON INTAKE TRAY	1
3	M5 x 0.8 x 18MM BHSCS STAINLESS STEEL	2
4	M5 FLAT WASHER STAINLESS STEEL	2
5	70-90MM STAINLESS STEEL WORM DRIVE HOSE CLAMP	1
6	60-80MM STAINLESS STEEL WORM DRIVE HOSE CLAMP	1
7	REVO TAG	1
8	MQB 1.8/2.0 PROFILTER FLAT PANEL	1