

# Fitting Instructions

## VW Polo GTI 2.0TSI Open Cone Intake Kit

Fitting Difficulty



### Contents

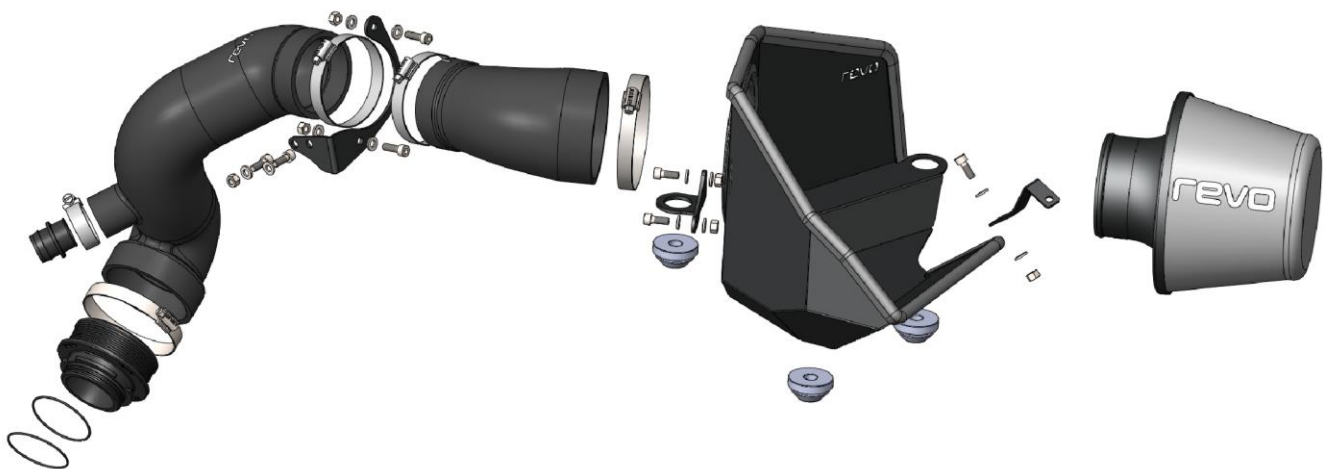
Description	Quantity
Turbo inlet hose	1
Filter hose	1
Heatshield Assembly	1
MAF Bracket	1
Heatshield grommet bracket	1
Heatshield front bracket	1
VW OE Grommet	3
Machined turbo inlet	1
PCV Coupler	1
Viton o-ring	2
Air filter	1
80-100 Hose clamp	1
70-90 Hose clamp	1
60-80 Hose clamp	2
25-40 Hose clamp	1
M6x16 Cap head S/S	5
M6x20 Cap head S/S	2
M6 flat washer	12
M6 nylock	6

### Recommended Tools

Tools	Size
Ratchet	
Sockets	7mm
Socket extension	
Torx Bits	T25 / T30
Constant Tension Pliers	
Flat Head Screwdriver	Small/medium
Spanner	10mm
Allen key / socket	5mm



Before starting, please ensure the engine is cool. Engine temperatures can remain high for a substantial amount of time after use.



# Fitting Instructions

## VW Polo GTI 2.0TSI Open Cone Intake Kit

Fitting Difficulty



- 1 Remove top engine cover and disconnect MAF sensor.



- 2 Remove the intake hose by loosening the jubilee clamp and tension clamp. Pull off PCV pipe from turbo elbow.



- 3 Undo the T30 on the turbo elbow and turn clockwise around 45\* and remove. Pull out T30 screw as no longer required.



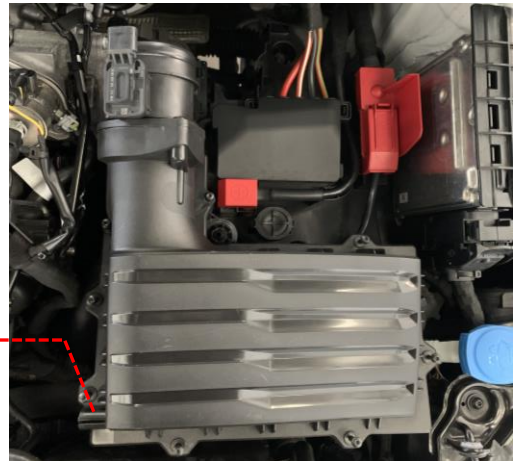
# Fitting Instructions

## VW Polo GTI 2.0TSI Open Cone Intake Kit

Fitting Difficulty



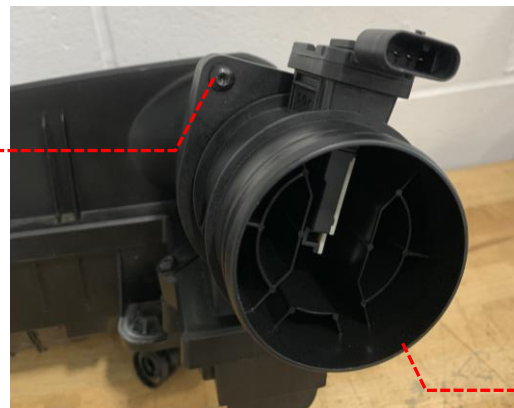
- 4 Remove the OE airbox by first pulling the vacuum hose off and then pulling up from the rubber mounts.



- 5 Install the Revo machined turbo inlet, first ensuring the o-rings are seated in the grooves in the neck. Locate onto the tabs on turbo and twist into place



- 6 Remove the MAF housing from the OE airbox by removing the 2 x T25 torx screws holding it in place.



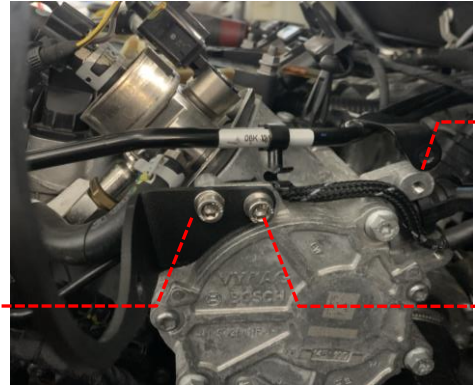
# Fitting Instructions

## VW Polo GTI 2.0TSI Open Cone Intake Kit

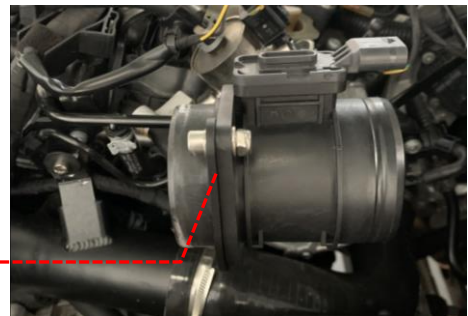
Fitting Difficulty



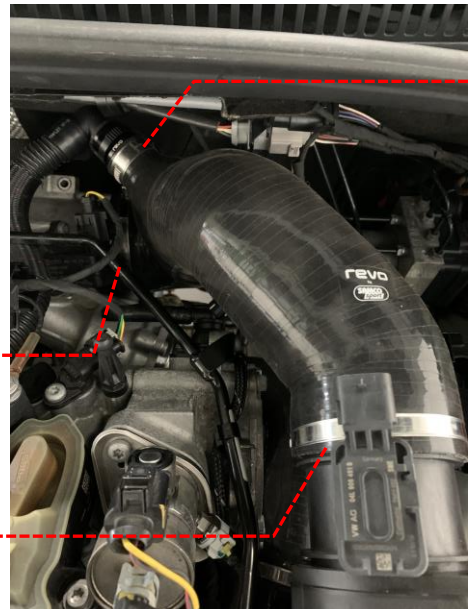
- Remove the 2 x T30 screws from the metal coolant pipe and lift out of your way. Install the Revo MAF bracket to the engine using the supplied M6x16 bolts, washers and nylock. Note one of the holes on the engine is threaded so will not need a nylock nut.



- Install the MAF housing to the MAF bracket using the supplied M6x20 cap head bolts, M6 washers and M6 nylock nuts in the orientation shown.



- Install the machined PCV adapter in the Revo intake hose using the 25-40 hose clamp. Next install to the machined turbo inlet and MAF housing using supplied 70-90 & 60-80 hose clamps.





## Fitting Instructions

### VW Polo GTI 2.0TSI Open Cone Intake Kit

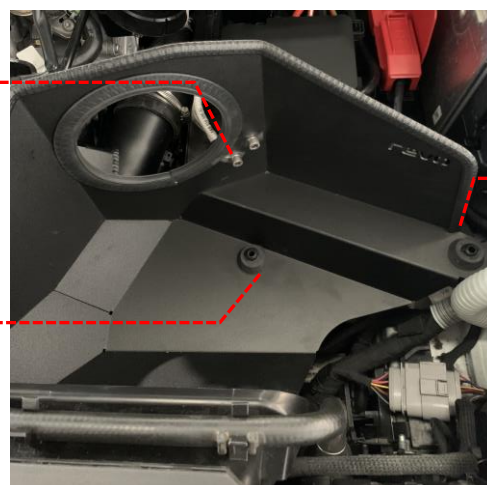
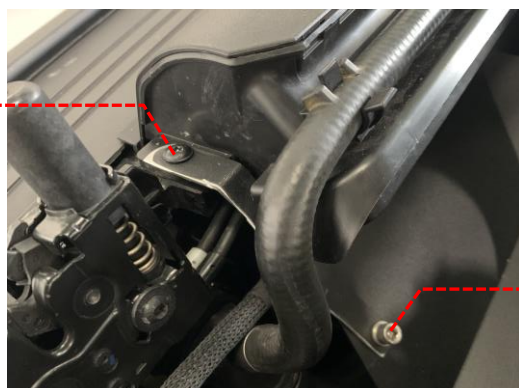
Fitting Difficulty



- 10 Install 2 x rubber grommets to the heatshield and 1 x to the heatshield bracket. Next bolt the bracket to the heatshield using the M6x16 cap head, M6 washers and M6 nylock nuts.



- 11 Install heatshield in car by pushing the rubber grommets onto locating pins you removed airbox from. Next install the front bracket by removing the T30 screw at the front and bolt the bracket to the same position, then attach to heatshield with the M6x16 cap head, M6 washers and M6 nylock nut.



## Fitting Instructions

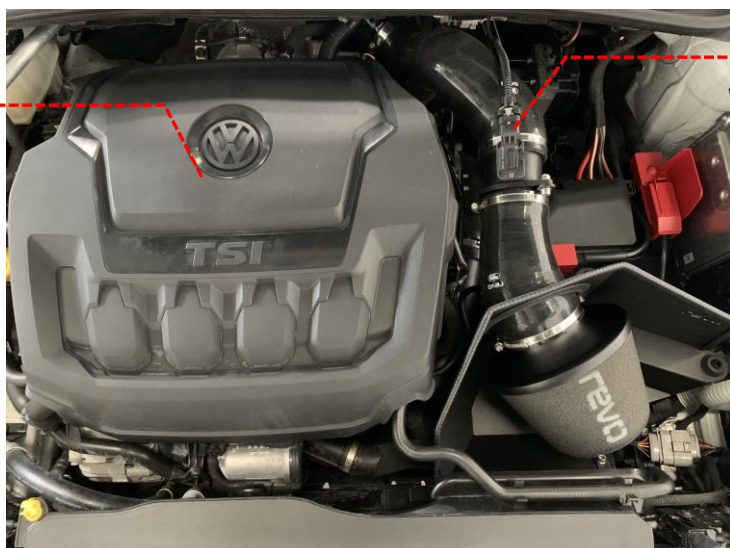
### VW Polo GTI 2.0TSI Open Cone Intake Kit

Fitting Difficulty



- 12 Install the Revo filter hose to the MAF housing using the supplied 60-80 hose clamp. Then install the Revo cone filter to the filter hose using the supplied 80-100 hose clamp and secure. Attach the vacuum hose to the take-off on the filter hose and ensure all clamps and bolts are secure. Re-install the MAF plug to housing and then the engine cover.

Your installation is now complete.



# Fitting Instructions

Fitting Difficulty



VW Polo GTI 2.0TSI Open Cone Intake Kit

NO.	DESCRIPTION	QTY.
1	MQB 190P S Machined Turbo Inlet Hose	1
2	Mk6 Polo GTI Filler Hose	1
3	Mk6 Polo GTI Heatshield Assembly	1
4	Mk6 Polo GTI MAF Bracket	1
5	Mk6 Polo GTI Heatshield Grommet Bracket	1
6	Mk6 Polo GTI Heatshield front bracket	1
7	VW OE Rubber grommet	3
8	MQB MACHINED TURBO INLET (IS20/IS38)	1
9	COUPLER 2	1
10	1,5MM THICK x 56MM ID VITON O-RING	2
11	Replacement filter 201fsi	1
12	60-80 Hose clamp S/S	2
13	70-90 Hose clamp S/S	1
14	80-100 Hose clamp S/S	1
15	25-40 Hose clamp S/S	1
16	M6x16 Cap head bolt S/S	5
17	M6x20 Cap head bolt S/S	2
18	M6 Flat washer S/S	12
19	M6 Nylock nut S/S	6
20	Packaging - Intake box	1

**revo**

TITLE: **RV031M600300 Working Instructions**

SIZE DWG. NO. **A** REV. **00**

SCALE: 1:6 SHEET 1 OF 1