

Fitting Instructions

Revo Intercooler Pipe Upgrade Kit VAG 2.0/1.8 TFSI/TSI MQB

Fitting Difficulty



Dealer Fit Recommended

Contents

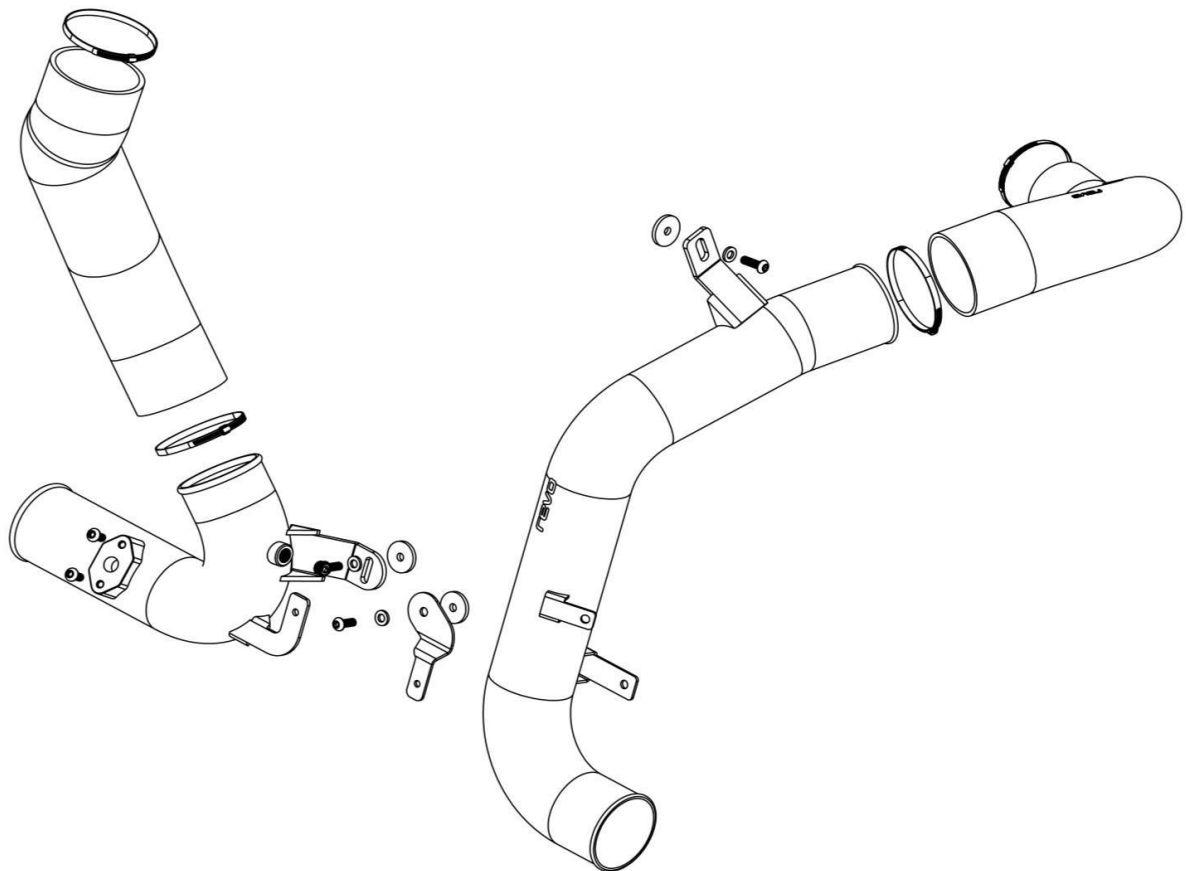
Description	
Revo Discharge Pipe	1
Revo Turbo Discharge Hose	1
Revo Throttle Pipe	1
Revo Throttle Hose	1
60-80 Hose Clamp	3
50-70 Hose Clamp	1
M6x1.0x20mm Bolt	2
M6x1.0x16mm Bolt	1
M6x1.0x13mm Bolt	2
1/8" NPT Plug	1
M6 Flat Washer	3
Rubber Washer	3

Recommended Tools

Tools	Size
Ratchet	
Wobble Extension	
Sockets	7, 8mm
Torx Bits	T25, T30
Pick	Small
Flat Head Screwdriver	Small



Before starting, please ensure that the engine is cool and the battery is disconnected. Engine temperatures can remain high for a substantial amount of time after use.



Fitting Instructions

Revo Intercooler Pipe Upgrade Kit VAG 2.0/1.8 TFSI/TSI MQB

Fitting Difficulty

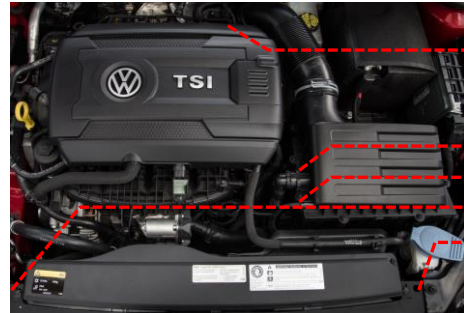


Dealer Fit Recommended



Installation was performed on a MK7 Golf R. Installation on other vehicles will be similar but may not be exact.

- 1 Remove the front and main section. Start by loosening the hose clamp at the turbo inlet using a 7mm socket. Remove the 2 x T25 screws on the front airbox section. Disconnect the small vacuum hose and secondary air pump pipe (if installed). Pull the main airbox directly upwards to disengage the rubber mounting points. Set the airbox aside, out of the work area.



- 2 If fitted, unclip the gearbox breather from the battery tray and set aside.



- 3 Using a 7mm socket loosen the 2 x clamps on the discharge turbo hose.



- 4 Using a T30 socket loosen the bolt mounting the discharge hard pipe to the engine head bracket.



Fitting Instructions

Revo Intercooler Pipe Upgrade Kit VAG 2.0/1.8 TFSI/TSI MQB

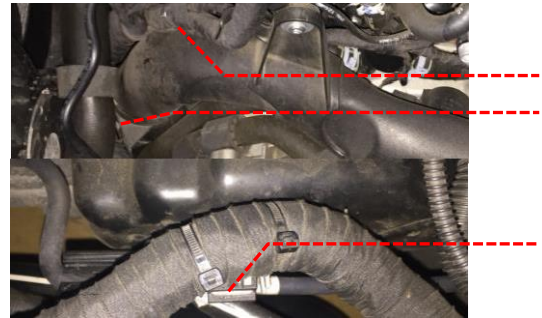
Fitting Difficulty



Dealer Fit Recommended

- 5 Disconnect the wiring harness from the discharge hard pipe at the 2 x mounting locations, shown. Also, disconnect the wiring harness loom mounting clip on the gearbox bracket.

Note: a pick or a small screwdriver may assist in disconnecting the wiring harness mounting point on the gearbox bracket.

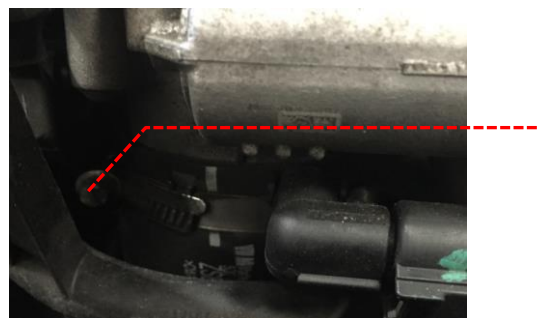


- 6 If fitted, disconnect the coolant pipe from the clip mounted to the discharge pipe.

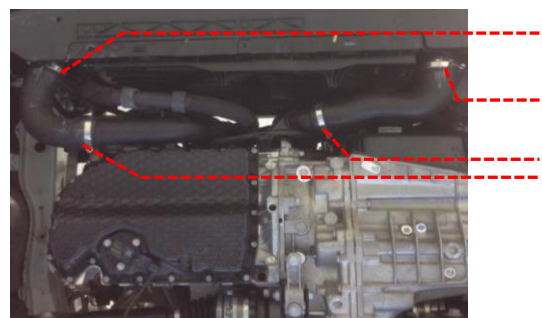


- 7 Using a 7mm socket, loosen the hose clamp holding the throttle pipe to the throttle body.

Note: a wobble drive may be useful to gain access to the hose clamp.



- 8 From the underside of the vehicle use a 7mm socket to loosen the 4 x intercooler hose clamps and remove the intercooler hoses.



Fitting Instructions

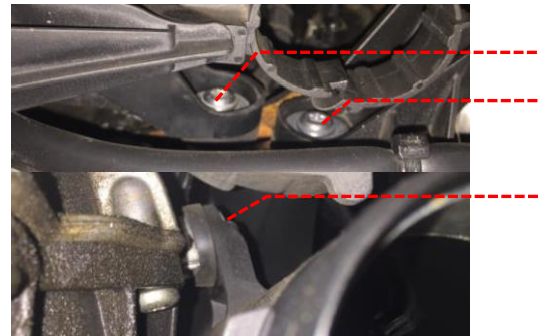
Revo Intercooler Pipe Upgrade Kit VAG 2.0/1.8 TFSI/TSI MQB

Fitting Difficulty

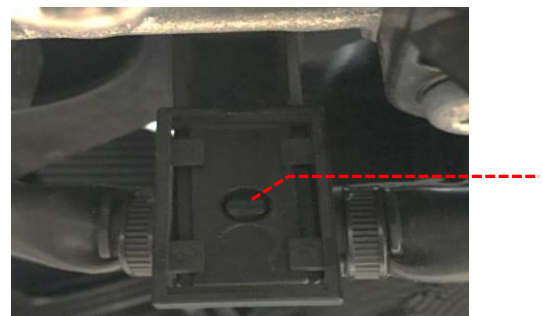


Dealer Fit Recommended

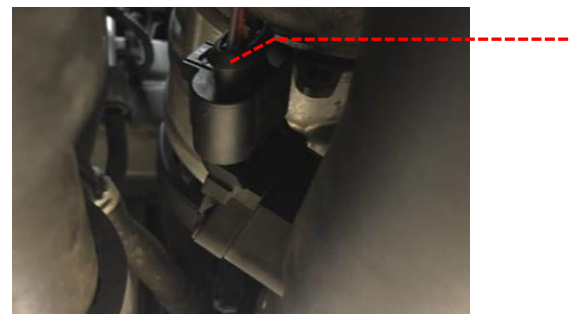
- 9 Using a T30 socket, remove the 3 x bolts mounting the discharge/throttle hard pipes to the engine block.



- 10 Unclip the wiring harness from the mounting on the discharge pipe by pressing the tab, shown, and pulling the harness downwards.



- 11 Disconnect the MAP sensor located on the throttle hard pipe.



- 12 Release the throttle pipe assembly from underneath the vehicle by gently pulling down until the hose frees from the throttle body and the assembly can be removed from the vehicle. Use a T25 socket to remove the 2 x screws holding the MAP sensor onto the pipe. Carefully remove the sensor from the pipe and place all parts aside.



Fitting Instructions

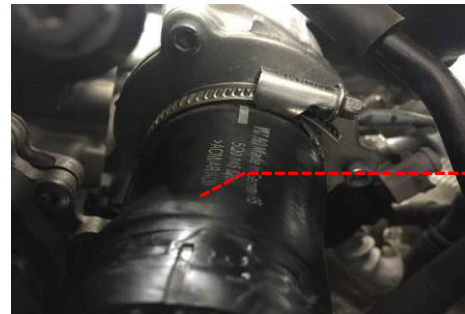
Revo Intercooler Pipe Upgrade Kit VAG 2.0/1.8 TFSI/TSI MQB

Fitting Difficulty



Dealer Fit Recommended

- 13 Remove the OE coupler hose from the turbo and the front section of the discharge hard pipe, set aside, it will not be reused.

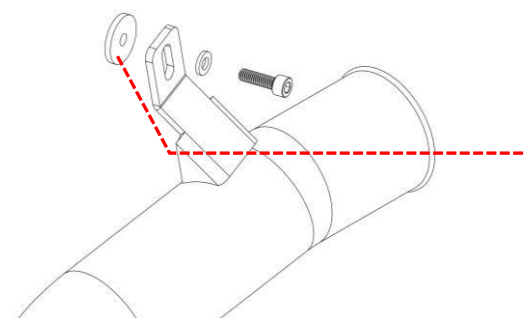


- 14 Remove the discharge hard pipe from the top of the engine bay and remove the coolant hose clip (if fitted). Set aside, out of the work area.
- Note: it can be difficult to remove the pipe as many of the coolant lines and wiring harnesses can catch on the pipe.

- 15 Install the Revo discharge hard pipe and Revo turbo coupler hose, as shown. Ensure the 50-70 hose clamp is positioned on the small end of the Revo hose and a 60-80 hose clamp is positioned on the large end of the Revo hose before installation.



- 16 Align the bracket on the Revo discharge hard pipe with the corresponding threaded hole on the cylinder head bracket. Install the supplied rubber washer between the threaded bracket and the Revo hard pipe. Loosely install the M6 bolt and washer. Do not tighten the bolt at this time.



Fitting Instructions

Revo Intercooler Pipe Upgrade Kit VAG 2.0/1.8 TFSI/TSI MQB

Fitting Difficulty

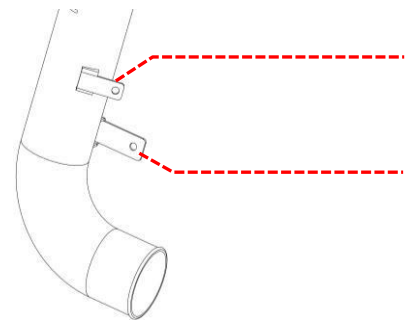


Dealer Fit Recommended

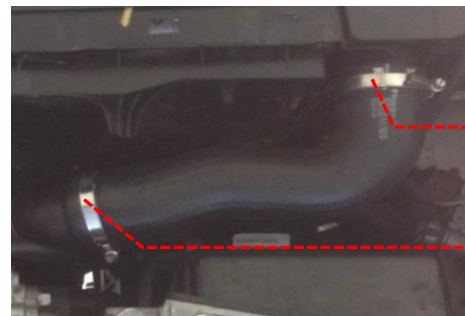
- 17 Align the Revo discharge hard pipe and hose to achieve the clearance, shown.



- 18 Reclip the wiring harness retaining clip to the upper bracket on the Revo discharge pipe. Install the coolant hose retaining clip onto the lower bracket and corresponding coolant hose. Refit the wiring harness mounting clip to the starter bracket.



- 19 Reinstall the intercooler discharge hose.
- Note: if the OE hose is being reused, lubrication may be required to allow the hose to fully seat onto the Revo discharge hard pipe.



- 20 Check the clearance of the Revo discharge hard pipe to the radiator fan shroud. If less than 5mm, adjust the discharge turbo silicone hose and hard pipe until a minimum clearance of 5mm is achieved. Once adequate clearance has been obtained at this point and at step 17, tighten all the hose clamps. Tighten the upper discharge pipe mounting bolt to 35Nm.

Note: once all the hose clamps and mounting bolt have been tightened recheck that the clearances have been maintained and did not shift during the tightening process.



Fitting Instructions

Revo Intercooler Pipe Upgrade Kit VAG 2.0/1.8 TFSI/TSI MQB

Fitting Difficulty

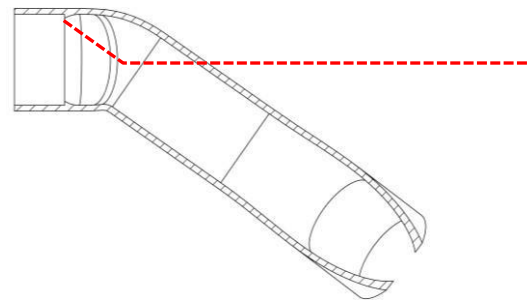


Dealer Fit Recommended

- 21 Install a 60-80 hose clamp onto the throttle end of the Revo throttle hose and position the clamp as shown. Using an 8mm socket, tighten the hose clamp slightly so that it resists rotating during installation.

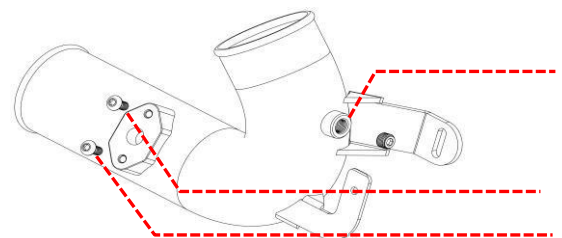


- 22 Install the Revo throttle hose ensuring the section with the internal step, as shown, is inserted onto the throttle body. Align the Revo hose within the engine bay until the Revo hose has a minimum 1-2mm clearance to all surrounding parts. Install the remaining 60-80 hose clamp onto the bottom of the Revo hose.

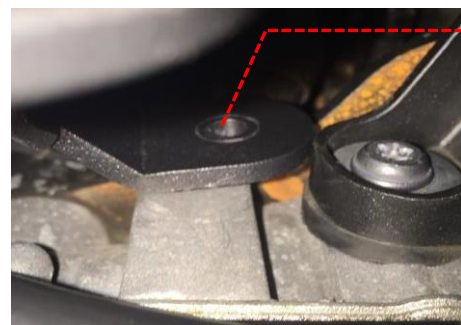


- 23 Ensure the NPT plug on the Revo throttle hard pipe is fully tightened. Install the MAP sensor into the Revo throttle pipe using the button head screws, supplied. Ensure the sensor is positioned in the same orientation as OE.

Note: the NPT plug **MUST** be fully tightened on installation. Replacement NPT plugs are commercially available, if required.



- 24 Install the Revo throttle hard pipe onto the Revo hose. Bolt the Revo throttle hard pipe to the block using the M6x16mm bolt and M6 washer supplied, as shown. Note: ensure the supplied rubber washer is used between the Revo pipe bracket and block (not shown). Do not fully tighten the bolt at this time.



Fitting Instructions

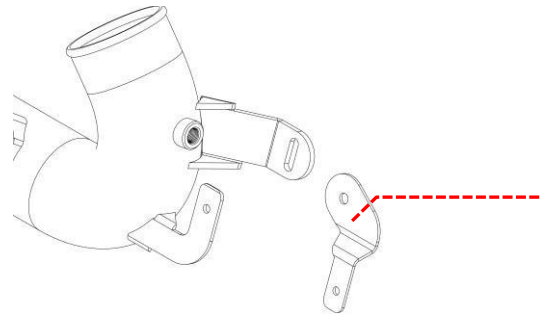
Revo Intercooler Pipe Upgrade Kit VAG 2.0/1.8 TFSI/TSI MQB

Fitting Difficulty

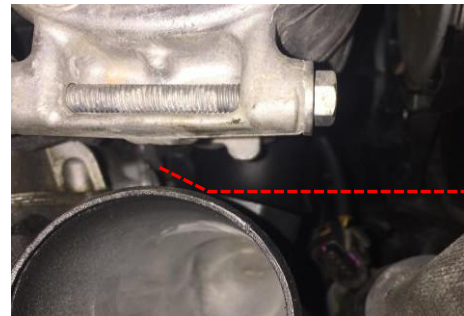


Dealer Fit Recommended

- 25 Install the Revo wiring harness bracket, as shown. Note: ensure a rubber washer is used between the Revo bracket and engine block, and that a M6 washer is used between the bolt and bracket. Tighten the bolt to 30Nm.



- 26 Align the Revo throttle hard pipe until there is a minimum clearance of 6-7mm between the top of the pipe and the underside of the air conditioning compressor. Once the clearance has been achieved tighten the bolt to 30Nm.



- 27 Install the coolant hose and wiring harness clips onto the Revo brackets.



- 28 Install the remaining intercooler hose onto the Revo throttle hard pipe. Double check that a 2-3mm clearance remains between the intercooler hose and the underside of the air conditioning compressor, readjust the Revo throttle pipe if necessary. Tighten the 3 x hose clamps.



- 29 Check that everything is tight and is correctly aligned. Refit all OE parts back to vehicle, reinstallation is the reverse of removal. Follow any factory torque specification during reinstallation of OE parts. Test drive the vehicle to ensure vehicle performs correctly and there are no leaks/part interference during operation. Your installation is now complete!