

Fitting Instructions

Revo Torque Mount Kit VAG 2.0 TFSI/TSI MQB

Fitting Difficulty



Dealer Fit Recommended

Contents

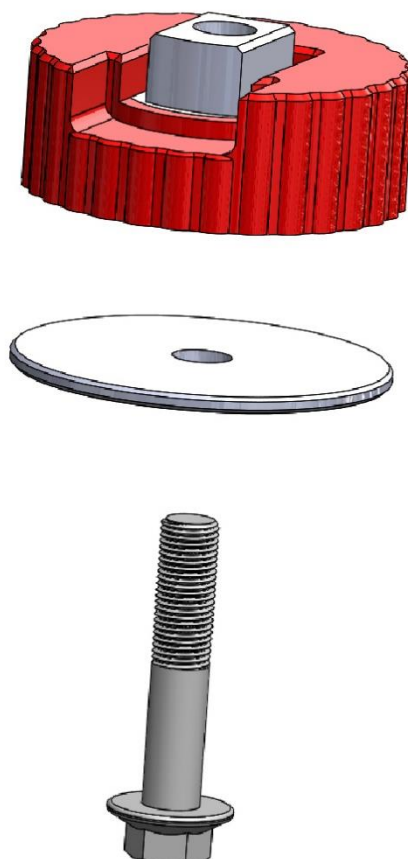
Description	
Revo Lower Torque Mount	1
Revo Torque Mount Tool Kit	1
Class 10.9 M14x1.5x65 Flange Bolt	1
Large Stainless Steel Washer 4mm	1
Class 12.9 M10x1.5x180 Fully Threaded Socket Head Cap Screw	1
Class 8.8 M10x1.5x25 Hex Head Cap Screw	1

Recommended Tools

Tools	Size
Ratchet	
Sockets	13, 16, 21, 22mm
Hex Key	8mm
Copper Grease	



Before starting, please ensure that the engine is cool. Engine temperatures can remain high for a substantial amount of time after use.



Fitting Instructions

Revo Torque Mount Kit VAG 2.0 TFSI/TSI MQB

Fitting Difficulty



Dealer Fit Recommended



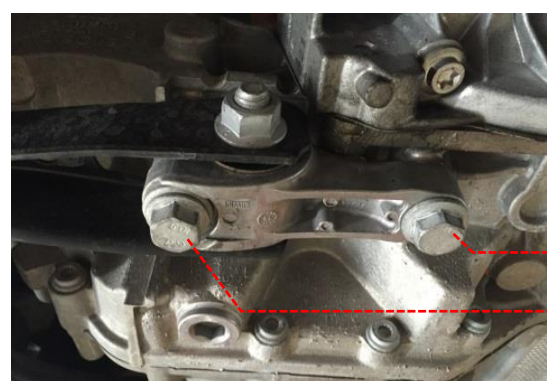
Installation was performed on a MK7 Golf GTI. Installation on other vehicles will be similar but may not be exact.

1 Raise the vehicle to gain access to the underside.

2 Using 13mm and 21mm sockets, loosen the 4 x front anti-roll bar mounts. Note: do not fully remove the anti-roll bar mounts. Loosen and remove the subframe torque mount bolt.



3 Using a 16mm socket, remove the 2 x bolts fixing the aluminium torque mount to the gearbox. Remove the OE torque mount arm assembly and set aside.



Fitting Instructions

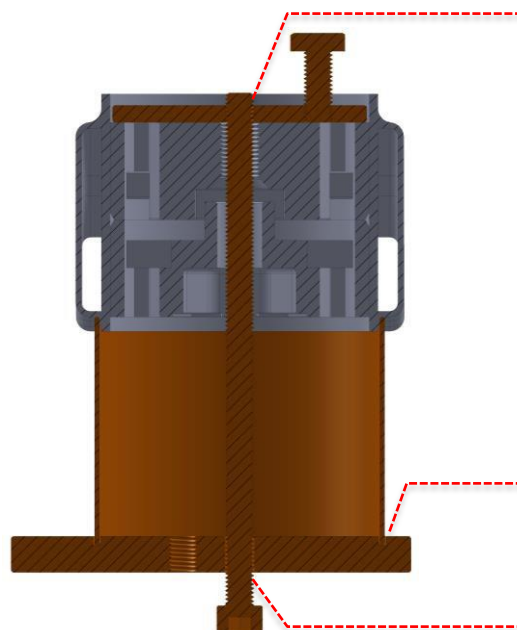
Revo Torque Mount Kit VAG 2.0 TFSI/TSI MQB

Fitting Difficulty



Dealer Fit Recommended

- 4 Install the Revo installation tool, as shown. Note: the tube fits into the slots in the handle, the socket head cap screw inserts through the drilled hole in the handle and threads into the thicker threaded washer at the top of the subframe.



- 5 Using an 8mm hex key tighten the socket head cap screw until the OE lower subframe mount drops out from the subframe. Do not continue to tighten the bolt once the OE lower mount is removed. The OE upper mount should now be positioned as shown.

Note: vehicles with an aluminium subframe will require a small slit to be cut in the sidewall of the OE lower subframe mount. A serrated utility knife or metal hacksaw blade works well for this. See image, lower right.



Fitting Instructions

Revo Torque Mount Kit VAG 2.0 TFSI/TSI MQB

Fitting Difficulty

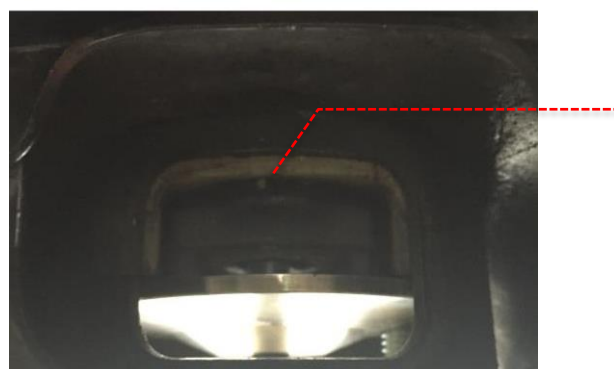
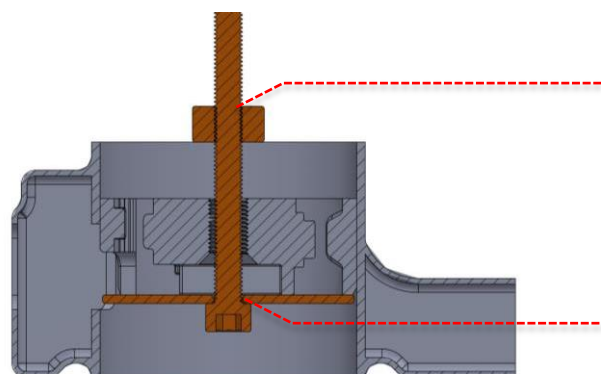


Dealer Fit Recommended

- Remove the Revo installation tool. Use the handle of the installation tool as a drift and a hammer the OE upper mount into the position shown. The plastic cut out of the OE mount should be past the window in the subframe, as shown.



- Insert the Revo installation tool, as shown. Note: now the socket head cap screw inserts through the thin, unthreaded washer and threads into the handle, now positioned at the top of the subframe. Also, note the orientation of the handle relative to the OE torque arm. Using an 8mm hex key tighten the socket head cap screw until the OE mount aligns with the subframe window, as shown.



Fitting Instructions

Revo Torque Mount Kit VAG 2.0 TFSI/TSI MQB

Fitting Difficulty



Dealer Fit Recommended

- 8 Whilst leaving the installation handle in place remove the socket head cap screw and washer. Clean the subframe aperture and ensure there are no sharp edges that may catch the Revo mount on installation, deburr with a file if necessary. Ensure the mounting is correctly positioned, with the cut out in line with the window in the subframe, and press the Revo mount into place by hand as far as possible making sure the mount remains square-on to the subframe. Note: a small amount of copper grease can be applied to the leading edge of the mount to assist with installation, this can be especially helpful on the leading edge of the cut out section of the bush which, if not installed correctly, can get caught on the edge of the subframe. Install the OE torque arm assembly. Reinstall the socket head cap screw and thin washer, as shown.



- 9 Using an 8mm hex key, tighten the socket head cap screw until the Revo mount aligns with the bottom of the torque arm window in the subframe. Note: it is especially important to ensure the mount is pressed in square to the subframe at this point and that the front edge of the cut-out section cleanly enters the subframe. After double checking the Revo mount alignment remove the installation tool.
- 10 Use a 22mm socket to install the M14 flange bolt and large stainless-steel washer (supplied). Torque the bolt to 100Nm.
- 11 Refit all OE parts back to vehicle. Reinstallation is the reverse of removal. Follow any factory torque specification during reinstallation of OE parts. Test drive the vehicle to ensure there are no leaks/part interference during operation. Your installation is now complete!

Note: the Revo installation tool can be used to reinstall the OE lower mount also. The process is the same as above. It is not recommended to reinstall the OE lower mounts that have been cut for removal from aluminium subframe vehicles.

*** Dealer note: please hand the "Assembly Sheet" to the customer to retain for their records.**

Fitting Instructions

Revo Torque Mount Kit VAG 2.0 TFSI/TSI MQB

Fitting Difficulty



Dealer Fit Recommended

ITEM NO.	DESCRIPTION	QTY.
1	PACKAGING - SMALL UNIVERSAL A9+ BOX (NOT SHOWN)	1
2	M14 X 1.5 X 70MM HEX HEAD FLANGE BOLT CLASS 10.9 35.50MM MINIMUM THREAD DEPTH DACROMET COATED	1
3	LOWER URETHANE REPLACEMENT MOUNTING PLATE	1
4		1