

# Fitting Instructions

Fitting Difficulty

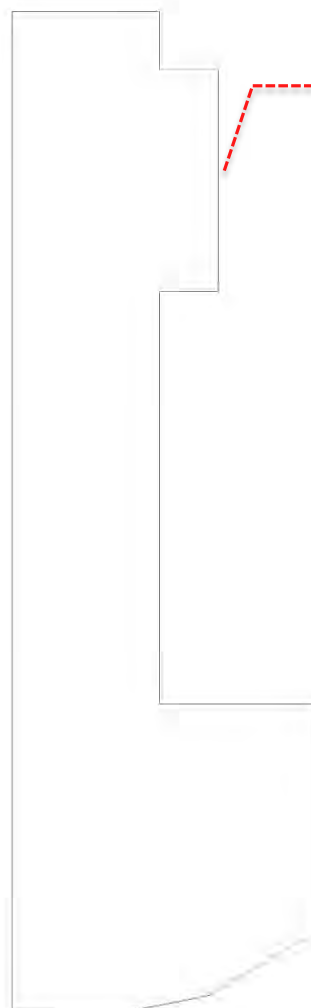
## Revo Big Brake kit fitment template Instructions

Dealer fitment recommended

To check if the Revo Big Brake kit will fit under your wheels please follow the bellows steps using the appropriate brake template to check.

1. Download and print the template for your car. Ensure that the template is printed to full scale, it is helpful to glue the template to a piece of cardboard.
2. The Outside line represents the maximum profile of the caliper.
3. Place the wheel location spigot of the template inside the wheel and rotate the template, checking that there is a minimum of 2mm clearance between the caliper profile template and the wheel in all positions (spokes, barrel, etc.)

Please note: Wheel balance weights may be moved if clearance is an issue with them.



Place this section  
inside wheel centre  
bore.

