

# Fitting Instructions

## Revo Torque Mount Kit (MQB Chassis)

Fitting Difficulty



Description	Qty
Revo Lower Torque Insert	1
Revo Lower Torque Insert Tool Kit	1
Class 10.9 M14x1.5x65 Flange Bolt	1
Class 12.9 M10x1.5x180 Fully Threaded Socket-Head Cap Screw	1
Class 8.8 M10x1.5x25 Hex-Head Cap Screw	1

Tools	Size
Ratchet	N/A
Sockets	13,16,21,22
Hex Socket	8

# Fitting Instructions

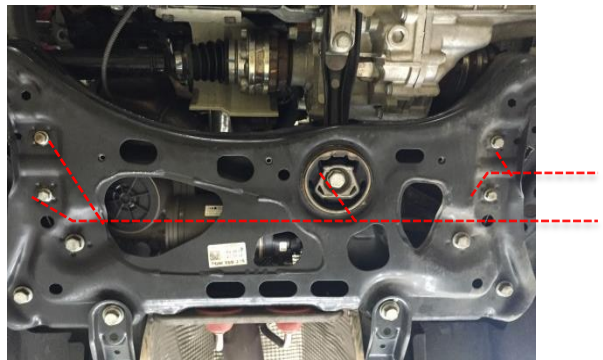
## Revo Torque Mount Kit (MQB Chassis)

Fitting Difficulty

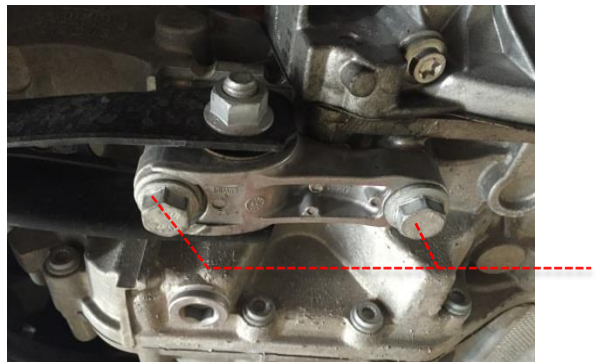


Installation was performed on a MK7 GTI. Installation on other vehicles will be similar but may not be exact

- 1 Securely raise the vehicle on a lift or jack stands to allow access to the underside of the vehicle
- 2 Using 13mm and 21mm sockets, loosen the four front anti-roll bar mounts. Do not fully remove roll bar mount bolts. Loosen and remove the sub-frame torque mount bolt



- 3 Using a 16mm socket, remove the two bolts fixturing the aluminium torque mount to the transmission. Remove the OE torque mount arm assembly and set it aside, out of the work area



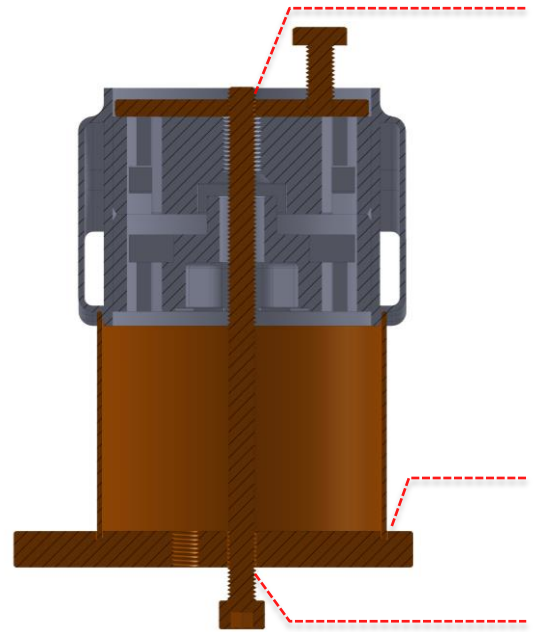
## Fitting Instructions

### Revo Torque Mount Kit (MQB Chassis)

Fitting Difficulty



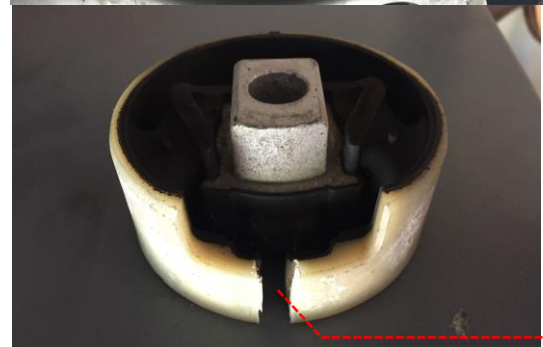
- 4 Install the Revo installation tool as shown. Note the tube inserts into the slots in the handle, the socket-head cap screw inserts through the drilled hole in the handle and threads into the thicker threaded washer at the top of the sub-frame



- 5 Using a 8mm hex, tighten the socket-head cap screw until the OE lower sub-frame mount drops out from the sub-frame. Do not continue to tighten the bolt once the lower OE mount drops out. The OE upper mount should be positioned as shown



Note: Vehicles with an aluminium sub-frame will require a small slit to be cut in the OE lower sub-frame mount. A serrated utility knife or metal hacksaw blade works well for this. See example at right



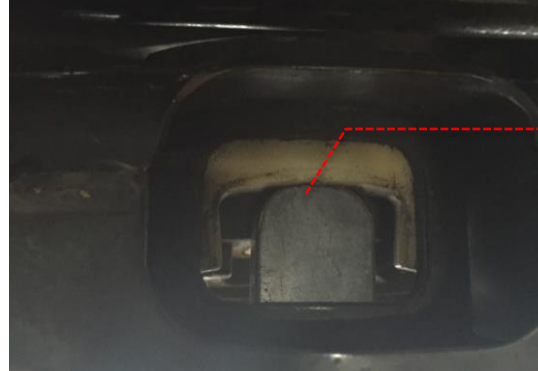
## Fitting Instructions

### Revo Torque Mount Kit (MQB Chassis)

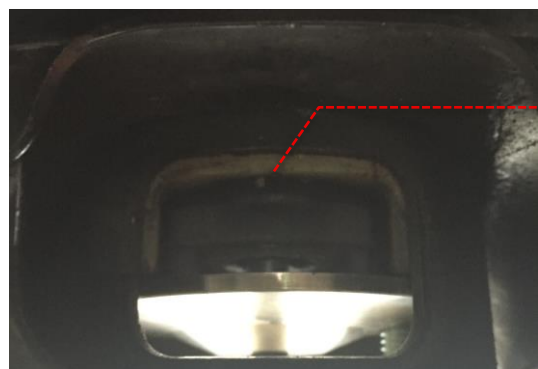
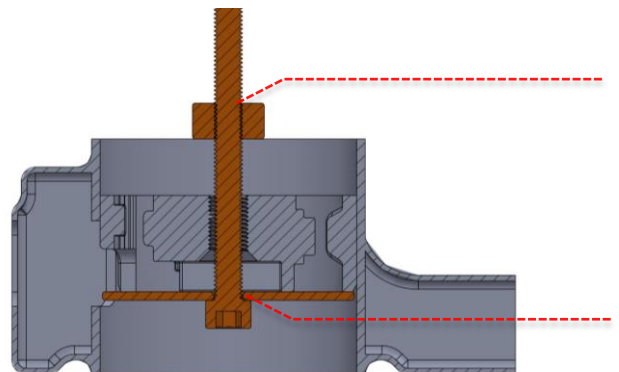
Fitting Difficulty



- 6 Remove the Revo installation tool. Use the handle of the Revo installation tool and a hammer to position the OE upper mount as shown. Be sure that the plastic lip of the mount is past the arm window as shown



- 7 Install the Revo installation tool as shown. Note that the socket-head cap screw now inserts through the thin, unthreaded washer and threads into the handle now positioned at the top of the sub-frame. Also note the orientation of the handle relative to the OE torque mount arm. Using an 8mm hex, tighten the socket-head cap screw until OE mount aligns with the sub-frame window as shown



## Fitting Instructions

### Revo Torque Mount Kit (MQB Chassis)

Fitting Difficulty



- 8 While leaving the installation handle in place, remove the socket-head cap screw and washer. Press the Revo mount into place by hand, ensuring that the edges of the mount align with the edges of the sub-frame arm window. Install the OE torque arm assembly. Reinstall the socket-head cap screw and thin washer as shown



- 9 Using an 8mm hex, tighten the socket-head cap screw until the Revo mount aligns with the bottom of the arm window in the sub-frame. After double checking the Revo mount alignment, remove the installation tool
- 10 Use a 22mm socket to install the supplied M14 flange bolt. Torque the bolt to 74 ft.-lbs. (100Nm)
- 11 Reinstall all remaining OE parts that were removed earlier. Reinstallation is done in the reverse of removal. Ensure all bolts are tightened to factory torque specifications. Check over the installation, making sure everything is secure before test driving. The installation is now complete. GO PLAY!



Note: If the OE lower mount requires reinstallation, the Revo installation tool can be used to reinstall the OE lower mount also. The process is the same as above. It is not recommended to reinstall OE lower mounts that have been cut for removal from aluminium sub-frame vehicles