

Fitting Instructions

Focus RS MK2/3 Rear engine torque mount kit

Fitting Difficulty



Contents

Description	Qty
Revo Ford Focus Rear Mount	1
M12x80 Hex head bolt	1
M12 Flange head nut	1
M12 Internal lock washer	1

Recommended Tools

Tools	Size
Socket wrench	n/a
Socket	15/19mm
Spanner	17/19mm
Socket extension	n/a
Ramp	n/a
Copper grease	n/a



Before starting, please ensure that the engine is cool. Engine temperatures can remain high for a substantial amount of time after use.



Fitting Instructions

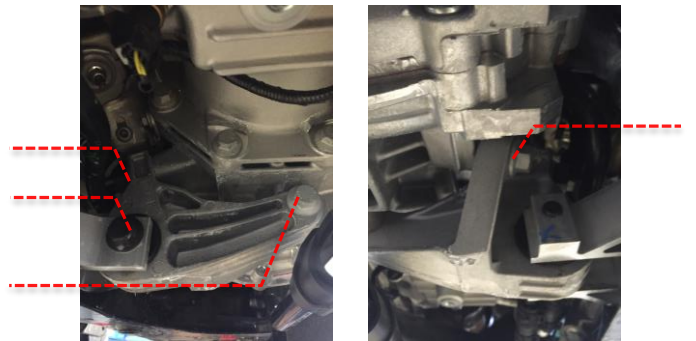
Focus RS MK2/3 Rear engine torque mount kit

Fitting Difficulty

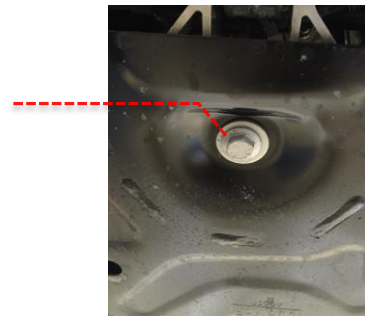


- 1 Remove the under tray from the car to expose the mount.

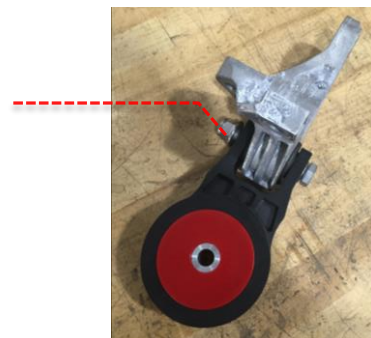
- 2 Remove the front bolt on the mount, then remove the three bolts holding the mounting plate to the gearbox, once you have taken these out you can remove the plate from the car.



- 3 Remove the rear bolt from the mount and slide out of the housing.



- 4 Assemble the new Revo mount to the plate you removed as shown using the supplied M12 bolt, M12 washer and M12 nut and then tighten. Note: The Revo logo must be facing down.



Fitting Instructions

Fitting Difficulty

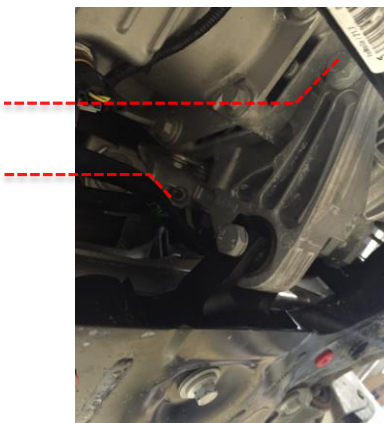


Focus RS MK2/3 Rear engine torque mount kit

- 5 Apply a small amount of copper grease to the top and bottom of the busing. Next slide the new Revo mount into position and secure in place using the bolt you removed earlier and torque to 80NM.



- 6 Re-install the three bolts holding the plate to the gearbox you removed earlier and torque to 40NM. You may need to lever the gearbox to align all the bolt holes.



- 7 Your installation is now complete. Ensure everything is tight and then replace the under tray in the reverse of removal. GO PLAY!