

Fitting Instructions

Fiesta MK7 Rear engine torque mount kit

Fitting Difficulty



Contents

Description	Qty
Revo Ford Fiesta Rear Mount	1

Recommended Tools

Tools	Size
Socket wrench	n/a
Socket	13mm
Socket extension	n/a
Ramp	n/a
Copper grease	n/a



Before starting, please ensure that the engine is cool. Engine temperatures can remain high for a substantial amount of time after use.



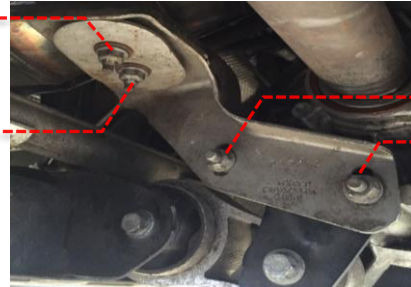
Fitting Instructions

Fiesta MK7 Rear engine torque mount kit

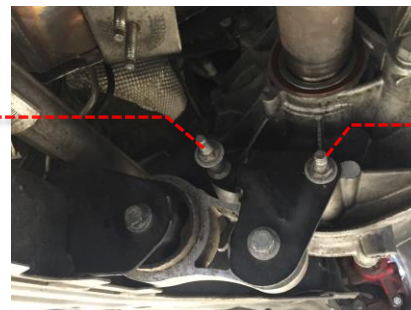
Fitting Difficulty



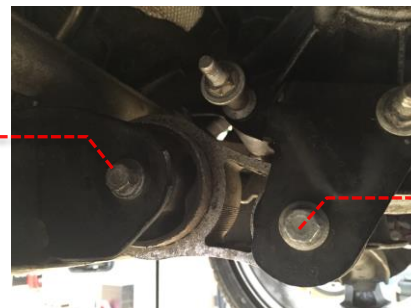
- 1 Remove the 4 13mm nuts shown and remove the bracket.



- 2 Loosen the 2 13mm nuts holding the black plate at the side of the mount. Note: You do not need to remove this and loosening it will be fine.



- 3 Remove the rear bolt from the mount first then the front and remove the mount from the car.



- 4 Apply a small amount of copper grease to the outside of the large bushes and install the new Revo mount. Install the rear bolt first finger tight and then the front. Tighten the rear bolt to 52NM and the front bolt to 47NM. Re install the other bracket you removed in the reverse and tighten all 4 nuts. Your installation is now complete. GO PLAY!

