

# Fitting Instructions

## Revo B9 2.0T Throttle and Charge Pipes

Fitting Difficulty



### Contents

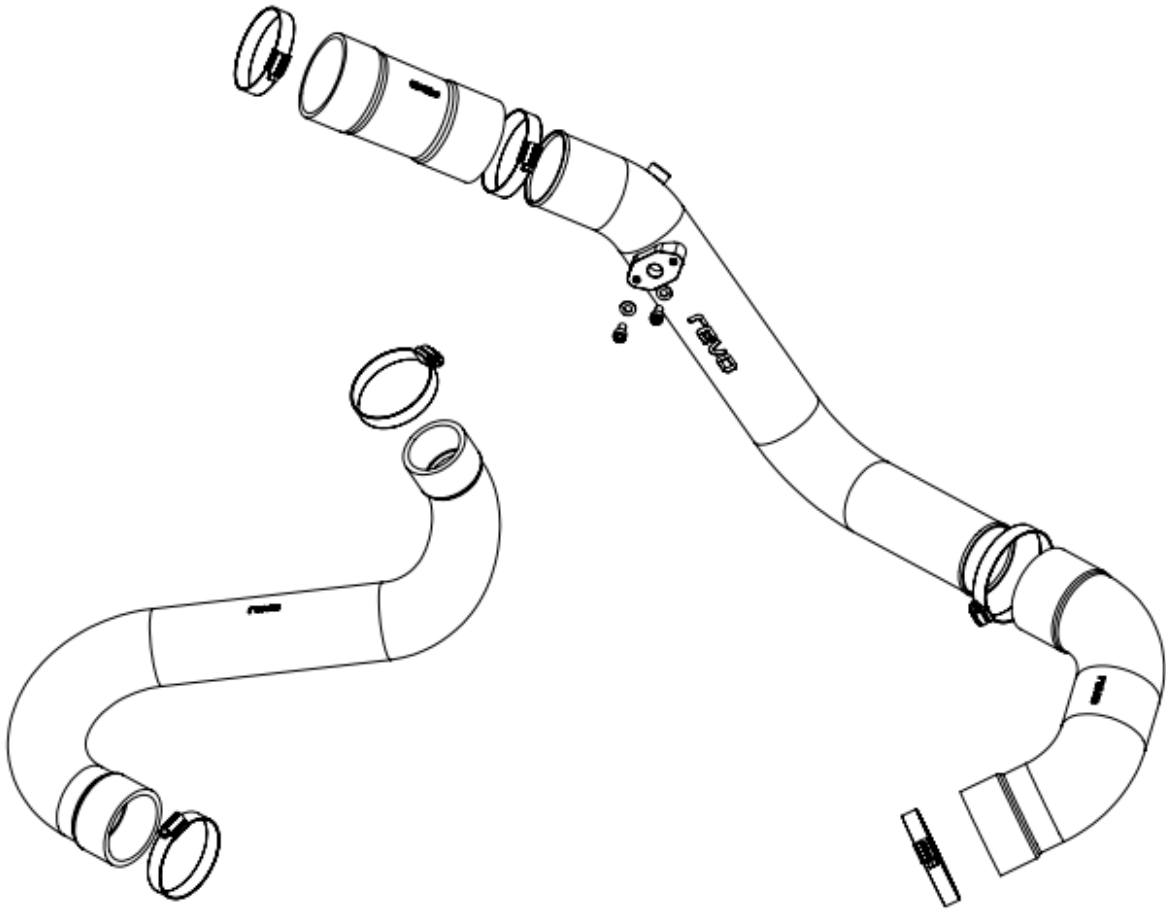
Description	Qty
Revo B9 2.0T Throttle Hard Pipe	1
Revo B9 2.0T Throttle Pipe Lower Silicone	1
Revo B9 2.0T Throttle Pipe Upper Silicone	1
Revo B9 2.0T Discharge Silicone	1
60-80mm Hose Clamp	2
50-70mm Hose Clamp	3
M6 x 1 x 12mm Button Head Bolt	2
M6 Flast Washer	2
40-60mm Hose Clamp	1

### Recommended Tools

Tools	Size
Sockets	7, 8, 10mm
Ratchet	
Ratchet Extension	
Torx Bits	T25, T30
Allen Keys	5mm
Straight Screwdriver	medium



Before starting, please ensure that the battery is disconnected and the engine is cool. Engine temperatures can remain high for a substantial amount of time after use.



# Fitting Instructions

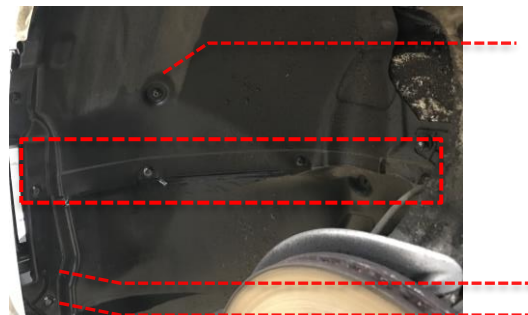
## Revo B9 2.0T Throttle and Charge Pipes

Fitting Difficulty

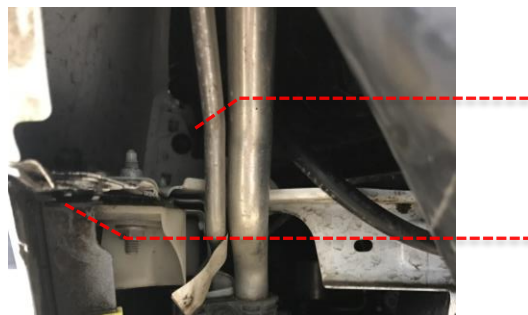


Installation was performed on a UK-spec. B9 A4. Installation on other vehicles will be similar but may not be exact

- 1 Put the vehicle on a lift and raise in the air, then remove both front wheels. Remove (7) T25 bolts from the wheel arch liner as well as the (2) 10mm plastic nuts. Peel back wheel arch liner to give access behind.



- 2 Remove the (1) plastic push-fit trim clip and the (1) T30 bolt that holds the bumper to the wing. Repeat steps 1 and 2 on opposite side of vehicle.



- 3 Remove (5) T30 and (2) T25 bolts that secure front bumper to main undertray.



- 4 Lower vehicle and release bonnet. Remove bonnet release handle from the slam panel by pressing in the release catch at the 12 o'clock position.  
Note – do not close bonnet without refitting the release handle.



# Fitting Instructions

## Revo B9 2.0T Throttle and Charge Pipes

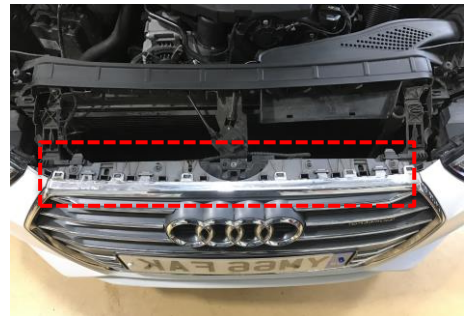
Fitting Difficulty



- 5 Remove the slam panel by unclipping along the front edge and then sliding it out from under the front air scoop.



- 6 Remove (4) T30 bolts from the top of the bumper.



- 7 Carefully pull the bumper free from the corner at each side.



- 8 Whilst standing in front of the vehicle, carefully pull the bumper forwards to release it.



# Fitting Instructions

## Revo B9 2.0T Throttle and Charge Pipes

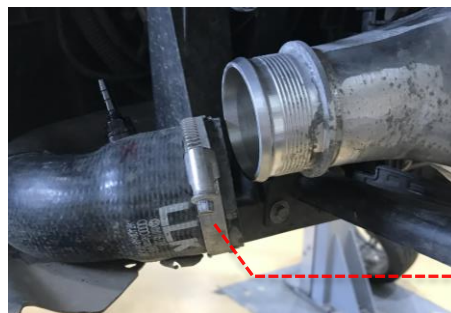
Fitting Difficulty



- 9 Before the bumper can be removed fully, disconnect the front parking sensor located on the left-hand side of the bumper. Once disconnected, carefully place the bumper out of the work area.



- 10 Using a 7mm socket, loosen the hose clamp on the charge pipe and remove from the stock intercooler.



- 11 Loosen the hose clip on the charge pipe where it connects to the turbo inlet and remove the pipe from the vehicle.



- 12 Place the new supplied hose clamp over the turbo inlet end of the Revo charge pipe and fit pipe to turbo inlet. Tighten the hose clamp and check fitment is good.



# Fitting Instructions

## Revo B9 2.0T Throttle and Charge Pipes

Fitting Difficulty



- 13 Place the new supplied hose clamp over the intercooler end of the Revo charge pipe and fit pipe to intercooler. Tighten the hose clamp and check fitment is good.



- 14 Loosen the hose clamp on the throttle pipe where it meets the intercooler and remove it.



- 15 Remove the engine cover. Then disconnect the multiplug from the MAP sensor, pull the red tab out and squeeze to release. Remove the MAP by turning anticlockwise and gently pulling free of the throttle pipe.



- 16 Loosen the hose clamp on the throttle pipe where it connects to the intake manifold and remove.





# Fitting Instructions

## Revo B9 2.0T Throttle and Charge Pipes

Fitting Difficulty



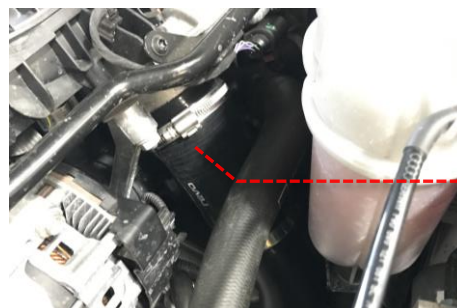
- 17 Remove the throttle pipe from the vehicle from the underside.



- 18 Loosely assemble the (3) sections of the new Revo throttle pipe and feed back in to vehicle from underside.  
**NOTE** – use the photos in these fitting instructions as reference for assembling the throttle pipe.



- 19 Fit the supplied new hose clamp over the intake manifold end of the Revo throttle pipe and fit to the intake manifold. Do not tighten yet.



- 20 Fit the supplied new hose clamp over the intercooler end of the Revo throttle pipe and fit to the intercooler. Do not tighten.



## Fitting Instructions

### Revo B9 2.0T Throttle and Charge Pipes

Fitting Difficulty



- 21 Check routing of the throttle pipe assembly making sure there are adequate clearances and no wiring is trapped. When this is confirmed tighten all (4) hose clamps on the Revo throttle pipe.



- 22 Refit the MAP sensor using the (2) 5mm socket head bolts and washers provided. Reconnect the multiplug and push in the red tab to secure.

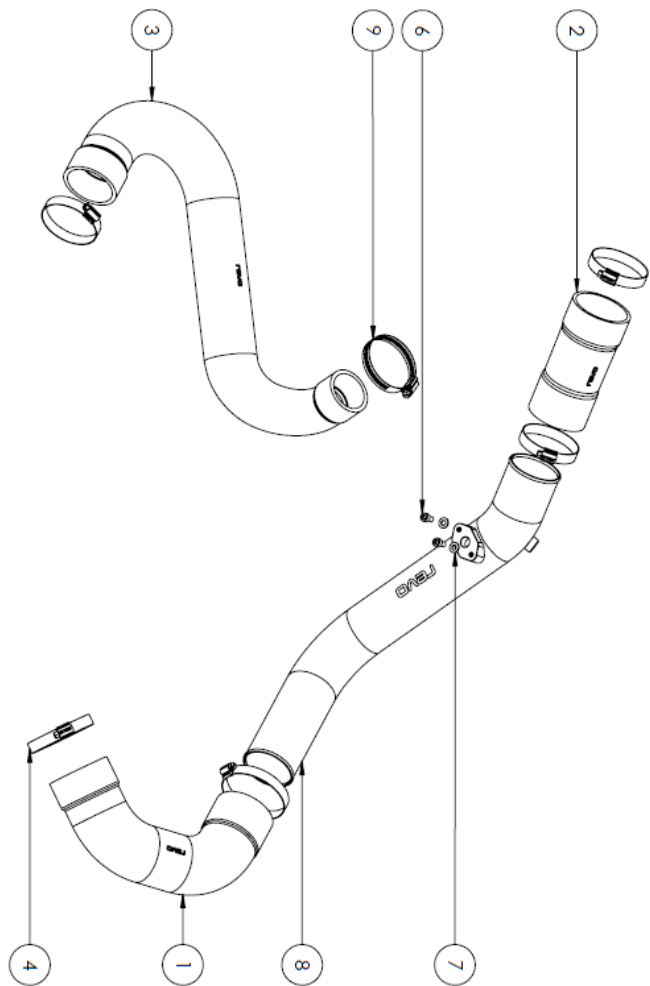


- 23 Refit all OE parts back to vehicle. Reinstallation is the reverse of removal. Follow any factory torque specification during reinstallation of OE parts. Check all sensors are reconnected. Also check bonnet release handle is refitted. Test drive the vehicle to ensure no leaks/part interference during operation. Your installation is now complete!

Fitting Instructions

Revo B9 2.0T Throttle and Charge Pipes

Fitting Difficulty



ITEM NO.	DESCRIPTION	QTY.
1	THROTTLE PIPE LOWER SILICONE HOSE	1
2	THROTTLE PIPE UPPER SILICONE HOSE	1
3	DISCHARGE SILICONE HOSE	1
4	WORM DRIVE 60-80MM STAINLESS STEEL HOSE CLAMP	2
5	WORM DRIVE 50-70MM STAINLESS STEEL HOSE CLAMP	3
6	M6 x 1 x 12mm FULLY THREADED STAINLESS STEEL BUTTON HEAD BOLT	2
7	M6 FLAT WASHER SS	2
8	THROTTLE HARD PIPE	1
9	WORM DRIVE 40-60MM STAINLESS STEEL HOSE CLAMP	1