

Fitting Instructions

2.0TFSI / TSI Pendulum Mount Kit

Fitting Difficulty



Dealer fitment recommended

Contents

Description	Qty
Revo torque mount arm	1
Revo torque mount link plate	1
Revo torque mount bushing	2
Revo bolt bushing	1
Stainless steel M10x1.5x60 socket head screw	1
Stainless steel M10x1.5x25 socket head screw	1
Stainless steel M10 flat washer	1
Revo FSI torque insert	1
Revo TSI torque insert	1
Revo small filler washer	1
Revo large backing washer	1
Class 10.9 M14x1.5x70 flange bolt	1

Recommended Tools

Tools	Size
Ramp	n/a
Ratchet	n/a
Sockets	16,18,21mm
Socket extension	n/a
Allen key	8mm
Hydraulic jack	n/a
Block of wood	2x4 or equivalent thickness



Before starting, please ensure that the engine is cool. Engine temperatures can remain high for a substantial amount of time after use.



Fitting Instructions

2.0TFSI / TSI Pendulum Mount Kit

Fitting Difficulty



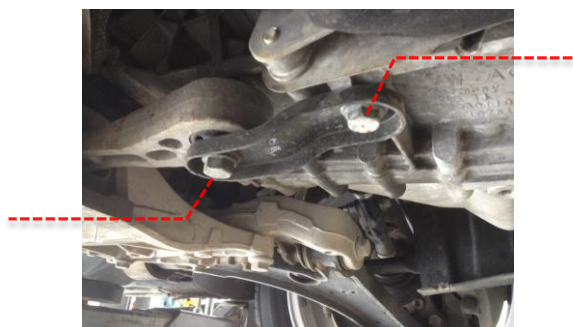
Dealer fitment recommended

- 1 Raise the vehicle on a lift or securely support the car on jack stands to allow sufficient access to the underside of the car.

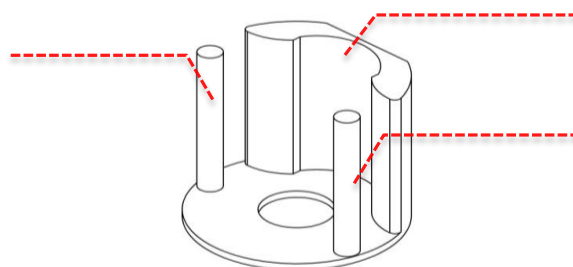
- 2 Using a 21mm socket remove the OE subframe mount bolt holding the OE torque mount arm to the two rubber subframe mounts.



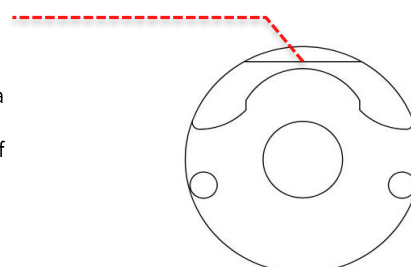
- 3 Using a 16mm socket remove the two bolts that couple the torque mount link and bracket to the transmission. Remove both the torque mount arm and link bracket.



- 4 Using some white lithium or red grease, heavily grease all the walls of the three Revo insert uprights to ease insertion. (Note: FSI insert pictured, TSI is insert installed the same way)



- 5 Place the insert into the corresponding locations on the OE rubber subframe mount. The back edge of the Revo insert should be parallel with the steering rack during installation. It is useful to use a hydraulic jack with a block of wood at this point to apply constant pressure to the base of the insert until it sits flush with the bottom of the rubber subframe mount.



Fitting Instructions

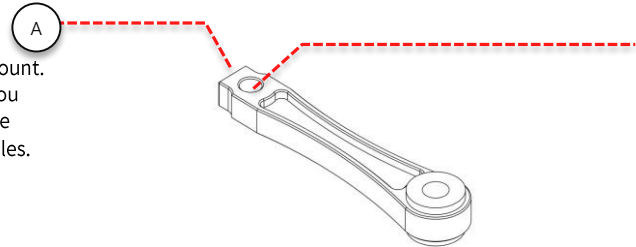
2.0TFSI / TSI Pendulum Mount Kit

Fitting Difficulty

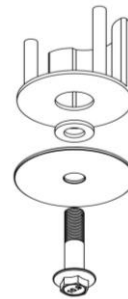


Dealer fitment recommended

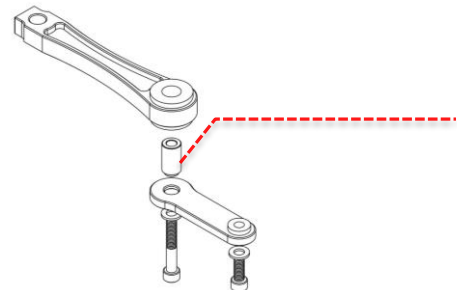
- 5 Insert the Revo torque mount arm into the rubber subframe mount. Area (A) inserts between the rubber subframe mounts. When you look through the mount from the bottom of the vehicle the hole should be concentric with both the rubber subframe mount holes.

**revo**

- 6 Loosely install the small filler washer, large backing washer and M14 bolt as shown to hold the Revo torque arm in place. The filler washer will sit inside the centre hole on the insert against the base of the rubber subframe mount.



- 7 Install the Revo link plate as shown. Be sure that the Revo bolt bushing is installed as shown. With an 8mm allen socket or key install both bolts with washers loosely.



- 8 Check that the Revo torque arm protrudes through the centre of the subframe provision. Adjust accordingly if required then torque the two socket head bolts to 30 ft.lbs.



- 9 Once everything else is installed, torque the M14 bolt on the rubber subframe mount to 74 ft.lbs. The insert should be touching the base of the rubber subframe mount. Check the other bolts are torqued accordingly and remove the vehicle from the ramp or jacks and test drive. Your installation is complete. GO PLAY!

